



Caledonian

Telephone Cables

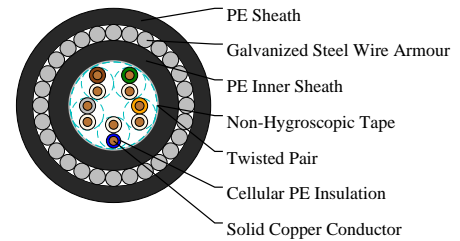
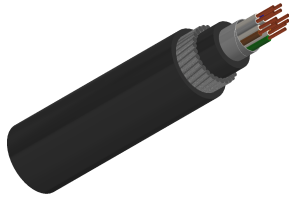
www.caledonian-cables.com

marketing@caledonian-cables.com

OUTDOOR TELEPHONE CABLES

Cellular PE Insulated, PE Inner Sheathed, Steel Wire Armoured and PE Outer Sheathed Jelly Filled Cable to CW 1128/1198

TP1128-02YF2Y(SWA)2Y-5P06



APPLICATIONS

The cables are designed for use in access or trunk networks, from telephone exchange to subscriber area. The cables are suitable for installation in ducts, direct burial in the ground and also for aerial installation with integral suspension strand. Jelly filled construction is for subscriber's cables installed underground or along the edge of pavement. An armoured option is offered for direct burial installations. A figure-8 self support option is offered for aerial installation.

STANDARDS

CW 1128/1198 (Steel wire armoured jelly filled cables)

CABLE CONSTRUCTION

Conductors: Solid annealed bare copper as per class 1 of BS 6360/IEC 60228.

Insulation: Cellular polyethylene as per BS 6234/BS EN 50290-2-23/IEC 60708.

Twisted Pairs: Insulated conductors are twisted into pairs with varying lay length to minimize crosstalk.

Cabling Element: Twisted Pairs.

Cable Core Assembly: Cables are composed of 10-pair units. Any extra pairs form a separate unit. Units are identified by colour coded binders. Standard construction is per CW 1128 given in Cable Make Up Chart below.

Core Wrapping: One or more non-hygroscopic polyester tapes are helically or longitudinally laid with an overlap. These tapes furnish thermal, mechanical as well as high dielectric protection between shielding and individual conductors.

Filling: The cable core interstices are filled with petroleum jelly to avoid longitudinal water penetration within the cable. The water resistant filling compound is applied to the air space between non-hygroscopic tape and shield, shield and sheath within the cable core.

Inner Bedding: Black polyethylene compound.

Armour: Galvanized steel wire.

Sheath: Black low density polyethylene as per BS 6234/IEC 60708/ASTM D 1248 which is compounded to withstand exposure to sunlight, temperature variations, ground chemicals and other environmental contaminants.

Ripcord (optional): Ripcord may be provided for slitting the sheath longitudinally to facilitate its removal.



Caledonian

Telephone Cables

www.caledonian-cables.com

marketing@caledonian-cables.com

Continuity Wire (optional): One tinned copper drain wire may be longitudinally laid to ensure electrical continuity of the screen.

COLOUR CODE

Standard colour code is per CW 1128 given in Colour Code Chart

PHYSICAL AND THERMAL PROPERTIES

Temperature range during operation (fixed state): -30°C – +70°C

Temperature range during installation (mobile state): -20°C – +50°C

Minimum bending radius: 10 x Overall Diameter (unarmoured cables); 15 x Overall Diameter (armoured cables)

DIMENSION AND PARAMETERS

Caledonian Cable Code	No. of Pairs	Conductor Diameter	Nominal Insulation Thickness	Nominal Diameter over Insulation	Sheath Thickness (min.)	Nominal Inner Sheath Thickness	Nominal Armour Wire Diameter	Overall Diameter (max.)	Approx. Weight
		mm	mm	mm	mm	mm	mm	mm	kg/km
TP1128 -02YF2Y (SWA)2Y -5P06	5	0.6	0.375	1.35	0.9	1.2	0.9	16.2	349